



# Sitecore CMS 6.4

## What's New in Sitecore CMS 6.4

*This document describes the new features and changes introduced in Sitecore CMS 6.4*

## Table of Contents

Introduction.....	3
The Page Editor Redesign.....	4
The Page Editor User Interface.....	4
Page Editor Modes.....	4
The Ribbon.....	5
Configuring the Page Editor UI.....	5
Editing a Page.....	6
Common Object Properties.....	6
Editable Fields.....	7
Designing a Page.....	7
Edit Frames.....	7
Managing Renderings.....	8
Managing Placeholders.....	8
Inserting New Renderings.....	8
Item Thumbnails.....	10
Layout Presets.....	10
The Rich Text Editor.....	11
Efficient HTML Editing.....	11
The New UI.....	11
Cloning.....	12
How Clones and Original Items Interact.....	12
Layout Deltas.....	13
Miscellaneous.....	14
More Browsers Supported.....	14
Using ASP.NET 4.0.....	14
Using MVC.....	14

# Introduction

This document describes the new features and changes introduced in Sitecore CMS 6.4. Readers of this document should be familiar with Sitecore, its interfaces and general architecture.

# The Page Editor Redesign

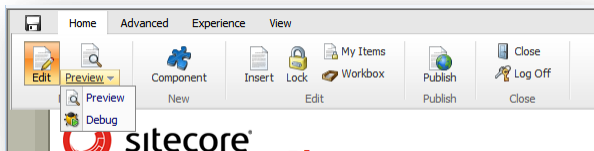
In Sitecore CMS 6.4, the Page Designer has been integrated into the Page Editor in a new consistent UI. The usability of this combined UI has been improved based on customer feedback. The new UI is also the foundation for some new in-page editing features that will be coming in future Sitecore releases.

## The Page Editor User Interface

The Page Editor UI has been changed significantly. Now, you can edit and design web pages in the Page Editor. Moreover, you can choose which editable elements are displayed on a page when you are working in the Page Editor.

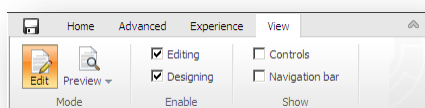
### Page Editor Modes

The Page Editor modes that existed in Sitecore CMS 6.3 have been changed significantly.



The edit and design modes have been combined.

- You can use the check boxes in the ribbon to enable or disable editing and designing.

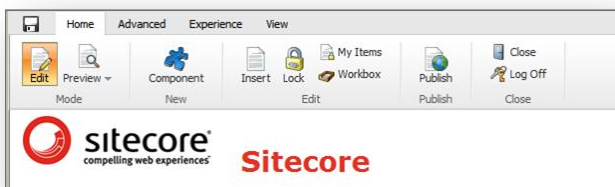


- When you are editing a page, you can press CTRL and click a link on the page to navigate to that item.

For more information about configuring the Page Editor modes, see *Chapter 3* of the *Content Author's Cookbook* and *Chapter 5* of the *Client Configuration Cookbook*.

## The Ribbon

In Sitecore CMS 6.4, we have redesigned the Page Editor ribbon:



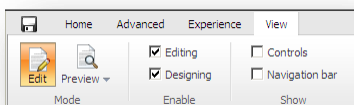
Here is a list of the main changes:

- The ribbon now stays on the top of a window by default. You can always see the ribbon even when you are scrolling down a page. For backwards compatibility, Sitecore still supports the use of the placeholder attribute `key="webedit"` to place the ribbon in an arbitrary location. However, we recommend that you do not use this method.
- The ribbon has a new visual design. The goal of the redesign is to make it simpler and easier to use. The new ribbon is more compatible with various web sites designs.
- The tabs and buttons have been rearranged. Some commands have been removed.
- The ribbon can be collapsed to take up less screen space.
- The ribbon is the only available option. There is no *buttons* option, but you can collapse the ribbon.
- The Treecrumb has been renamed as the Navigation bar. The Navigation bar is hidden by default. You can enable it on the **View** tab.
- Ribbon commands no longer change their context according to the Navigation bar selection. You can only use the Navigation bar as a browsing tool.

For more information about the Page Editor ribbon, see *Chapter 3* of the *Content Author's Cookbook*.

## Configuring the Page Editor UI

There are several options in the ribbon that control the Page Editor UI. They are located on the **View** tab.



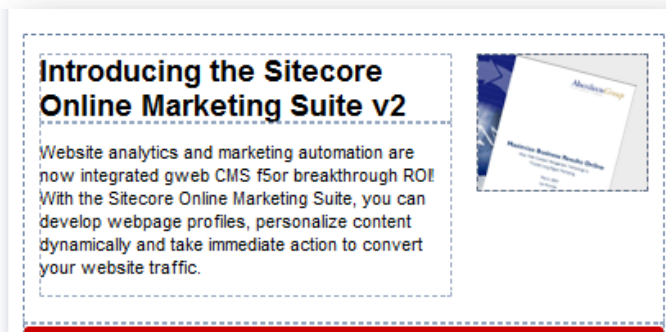
Use the check boxes on the **View** tab to enable:

- Selecting Editable Fields and Edit Frames.
- Selecting Renderings and Placeholders.
- Rendering of outlines of selectable objects.
- The Navigation bar.

If you only need to edit text, you can clear the **Designing** check box so that there are fewer selectable objects on the page. This makes it easier to select the elements that you need to edit.

You can use Sitecore security tools to restrict access to editing or designing features in the Page Editor. For example, if you are not allowed to design a web page, the **Design** check box is not available to you.

You can show outlines of all selectable objects on the page to discover the page structure, to understand how the page is organized and what elements are editable.



While the outlines are shown, the rest of the UI functions are displayed as usual. For example, you can enable all the controls so that you can investigate the page structure, edit the page for a while, and then disable all the controls so that you do not overload your view.

For more information about configuring the Page Editor UI, see *Chapter 9 of the Content Author's Cookbook*.

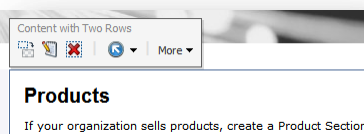
## Editing a Page

We have redesigned the editing UI completely. Now you can edit the content and design of a page at the same time.

You can edit editable fields. The list of editable field types has not been changed.


## Common Object Properties

When selected, every object displays a floating toolbar:



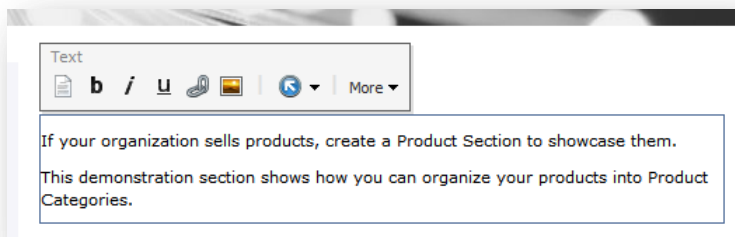
A floating toolbar includes:

- The object name — the name of the field, rendering and so on.
- The buttons specific to this particular object, both custom and built-in.

- The **Select Parent** button . Click this button to select a parent object. Expand the dropdown list and move the mouse over the parent objects to highlight those objects on the page. Use the dropdown menu to navigate the ancestor objects.
- The **More** dropdown contains commands used less frequently and provides UI scalability if you need a lot of custom commands. By default, the **More** dropdown list only contains the **Edit the related item** command. Click **Edit the related item** to open the Content Editor

## Editable Fields

Sitecore CMS 6.4 supports the following editable field types: single-line text, multi-line text, rich text, links, dates and the Word field.



The list of built-in commands for each field type also remains the same.

It is now easier to assign custom commands to fields. This process no longer involves setting up a new field type. You can now use the new **Page Editor Buttons** field on template field items for this purpose.

For more information about editing a page in the Page Editor, see *Chapter 3* of the *Content Author's Cookbook*.

## Designing a Page

When designing a page in Sitecore CMS 6.4, you can:

- Edit frames.
- Manage renderings.
- Manage placeholders.
- Add a new component.

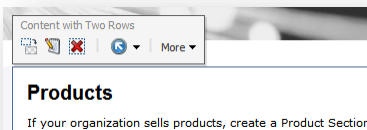
## Edit Frames

In Sitecore CMS 6.4, you can configure renderings to include custom commands in the Page Editor. Typically, you use Edit Frames when you want to create a selectable object (that is not a rendering) with custom commands. We recommend that you add commands to renderings instead of using edit frames. The fewer selectable objects that you have on the page, the easier it is to design the page.

For more information about Edit Frames, see *Chapter 5* of the *Client Configuration Cookbook*.

## Managing Renderings

As a result of the Page Editor redesign, you can now manage renderings on a web page.



When managing renderings, you can:

- Move a rendering either to the same placeholder, or to another placeholder. The possible locations of the rendering are restricted by security settings and placeholder setting.
- Edit rendering properties. When you change its properties, the rendering is refreshed.
- Delete renderings. This action does not remove the data source.


## Managing Placeholders

Sitecore CMS 6.4 lets you edit placeholder settings in the Page Editor.

Select a placeholder to edit its settings:

- Define which renderings can be inserted in this placeholder.
- Disable the placeholder in the Page Editor. If a placeholder is disabled (not editable), you cannot select it in the Page Editor; its content, however, functions as usual.

When you try to edit placeholder settings for a placeholder that does not have a placeholder settings item, Sitecore creates this item automatically.

In most designs, to select a placeholder, you click the **Select Parent** button  to navigate to a parent object from your selection.

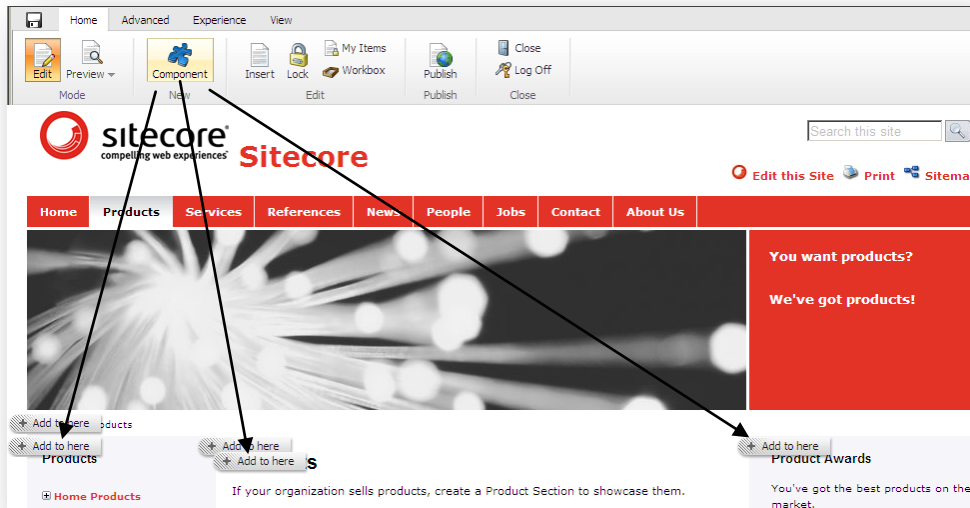
For more information about managing placeholders, see *Chapter 5* of the *Client Configuration Cookbook*.

## Inserting New Renderings

In Sitecore CMS 6.4 you can add components anywhere on the page and the appropriate placeholder will be assigned automatically. Now you do not have to select a placeholder first.



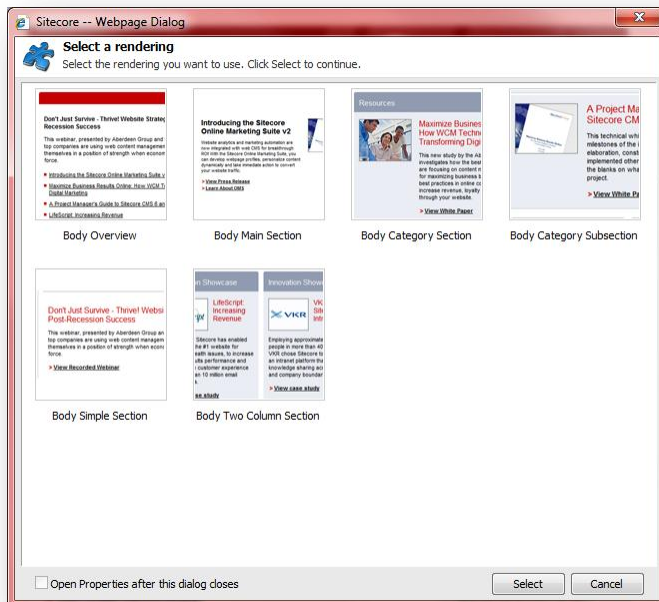
Use the **Component** button to insert new renderings.



When you click the **Component** button, the **Add to here** buttons appear in all the places where you can insert renderings.

The list of places and renderings that are available to you are restricted by the placeholder settings and by your security permissions.

When you click **Add to here**, the **Select a rendering** dialog box appears:



For more information about inserting new renderings, see *Chapter 5* of the *Client Configuration Cookbook*.

## Item Thumbnails

In Sitecore CMS 6.4, you can create a thumbnail image of every Sitecore item. These images help you to identify items throughout the Sitecore UI.

For example, the **Select a rendering** dialog box mentioned in the previous section will display the thumbnail if the rendered item has one assigned. Otherwise the icon will be displayed. Thumbnails make it easier for you to choose the item you need.

You can create an item thumbnail in the Content Editor.

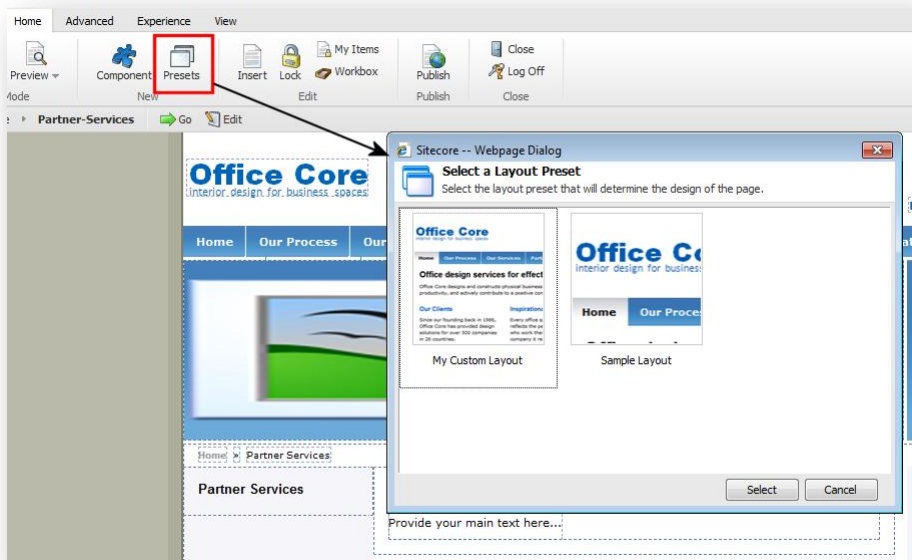
For more information about item thumbnails, see *Chapter 3* of the *Client Configuration Cookbook*.

## Layout Presets

The Page Editor now supports layout presets. We made a few changes to make layout presets easier to use for editors.

You can set up layout presets in the Content Editor.

To make editing easier, it's a good idea to create an item thumbnail for your layout preset. When you create a layout preset and make it available in the Page Editor, the **Presets** button is displayed in the ribbon:



Use the **Presets** button to select a layout preset. Applying the preset completely overwrites the current layout configuration of the item with a new one. However, you can roll back the changes

For more information about layout presets, see *Chapter 3* of the *Presentation Component Cookbook*.

## The Rich Text Editor

The new Sitecore CMS 6.4 Rich Text Editor contains improvements in both architectural and UI components that provide you with more features and flexibility when you edit content.

### Efficient HTML Editing

The Rich Text Editor has been upgraded to the RadEditor for ASP.NET AJAX, the newest version of the Telerik's RadEditor. It provides some architectural changes and major improvements such as an inline AJAX spellchecker and automated HTML indenting to allow more efficient HTML editing.

Sitecore CMS 6.4 performs fewer transformations of the HTML when loading and saving the contents of rich text fields. Additionally, the HTML processing engine has been changed to resolve problems where transformations produced HTML that was not valid or where tags or formatting was changed.

### The New UI

In Sitecore CMS 6.4, the Rich Text Editor appears inline instead of popping up as a modal dialog and stores its last dimensions. You can maximize or move the Rich Text Editor window within the parent window. Moreover, in most situations, the Rich Text Editor opens more quickly and its UI reacts faster.

For more information about editing content in the Rich Text Editor, see the *Chapter 5* of the *Content Author's Cookbook*. For more information about configuring the Rich Text Editor see *Chapter 3* in the *Client Configuration Cookbook*.

# Cloning

Sitecore CMS 6.4 presents a new feature for reusing and sharing data — cloning. Sitecore CMS 6.4 lets you create clones of items and branches of items. Sitecore clones a version of an item, but not the whole item. Clones are not just copies of the original item. The fields in a clone item are updated when the corresponding fields in the original item are updated.

In the Content Editor you can do many things with clones including:

- Create clone items.
- Convert clones into items.
- Create clones of clones.

## How Clones and Original Items Interact

When you create a clone, Sitecore establishes a connection between the clone and the version of the original item. When you edit the fields in an original item, Sitecore updates the corresponding fields in the clone item. If you edit a field in a clone item, and then edit the same field in the original item, Sitecore asks you what to do with the clone item field value:

- **Review the original item**  
Select this option to see the original item changes.
- **Accept the change**  
Select this option, to reset the field value to the current field value of the original item. The *[original value]* text appears next to the field titles.
- **Reject the change**  
Select this option, to keep the existing field value in the clone item and hide the message.

When you perform actions that can affect the relationship between original items and clones, Sitecore notifies you and explains the options that are available.

You can make it easier to identify clones by configuring the Quick Action Bar to display icons for cloned items.

If you create a clone of an item that has multiple versions, only the latest version is copied to the clone.

When you try to delete the version of the original item, Sitecore displays a message that lists all the clones of the current item and the clones of its child items. If you delete the original item, all clones become normal items and keep their current field values.

For more information about cloning and how clones and original items interact, see *Chapter 4* of the *Content Author's Cookbook* and *Chapter 1* of *Reusing and Sharing Data*.

## Layout Deltas

In Sitecore CMS 6.4, you can use Layout Deltas to reuse presentation details.

Layout deltas let items inherit partial layout details from the standard values of the item template. If an item inherits layout details, it only stores the differences (*deltas*) between its own layout details and the layout details of the item template. Any changes that you make to the layout details in the item template dynamically apply to all the items based on that template.

For example, when you design a website, you configure the *news item* data template so that the presentation settings define how all news items look on the website. When you update the *news item* data template, the appearance of all the news items is updated as well.

If you want one specific news item to look different, you update the item presentation using one of the Sitecore UIs (this is not specific to the Page Editor). Let's see how this works in Sitecore CMS 6.4 compared to earlier versions:

- In Sitecore CMS 6.3 and earlier versions, the template presentation is copied to the item. You change this copy according to new requirements. If you decide to update the *news item* data template at a later date, Sitecore will not update this item automatically because now the item has its own copy of the presentation configuration.
- In Sitecore CMS 6.4, the item will only store the changes that you have made according to new requirements. If the requirement is to have one additional rendering, the item will only store this rendering. When you change the data template, the item will start using the new design automatically, while continuing to keep the delta.

This process does not introduce any new UI concepts. The users will continue using Sitecore tools to design the look of data templates or individual items. Sitecore will automatically determine how to properly store and use this information.

The Layout Delta feature allows the Page Editor to store presentation configurations on items. The Page Editor now always modifies the layout definition of the current item.

For more information about layout deltas, see *Chapter 3* of the *Presentation Component Reference*.

## Miscellaneous

### More Browsers Supported

Sitecore CMS 6.4 supports the following web browsers:

- Microsoft Internet Explorer 7 and later versions. Sitecore does not support Internet Explorer 9 beta.
- Mozilla Firefox 3.6
- Google Chrome 6
- Apple Safari 5

#### Note

Sitecore CMS 6.4 supports all current stable versions of these browsers unless stated otherwise.

For more information on how to configure a browser, see the *Browser Configuration Reference*.

#### Note

Sitecore only supports Word and WebDAV using Internet Explorer and only when configured as instructed in the *Browser Configuration Reference*.

### Using ASP.NET 4.0

Sitecore CMS 6.4 supports running Sitecore under ASP.NET 4.0 application pools.

### Using MVC

Sitecore CMS 6.4 lets customers use MVC in the same solution where Sitecore is running. You have to make changes to the web.config file to use MVC.

For more information about MVC in Sitecore, see the *Integrating an ASP.NET MVC Web Application in Sitecore CMS* document.